

**Aberdeen Dynamics**

**FLUID**  
SPECIALTIES

**INDUSTRIAL**  
SPECIALTIES, LLC

**VALTEC** CNC

# Technologies Capabilities Solutions

Engineering

Hydraulic

Fluid Conveyance

Valve Actuation

Electro-mechanical

Pneumatic

Gear Boxes

Electronic Controls & Sensors / IoT

Winch and Hoist

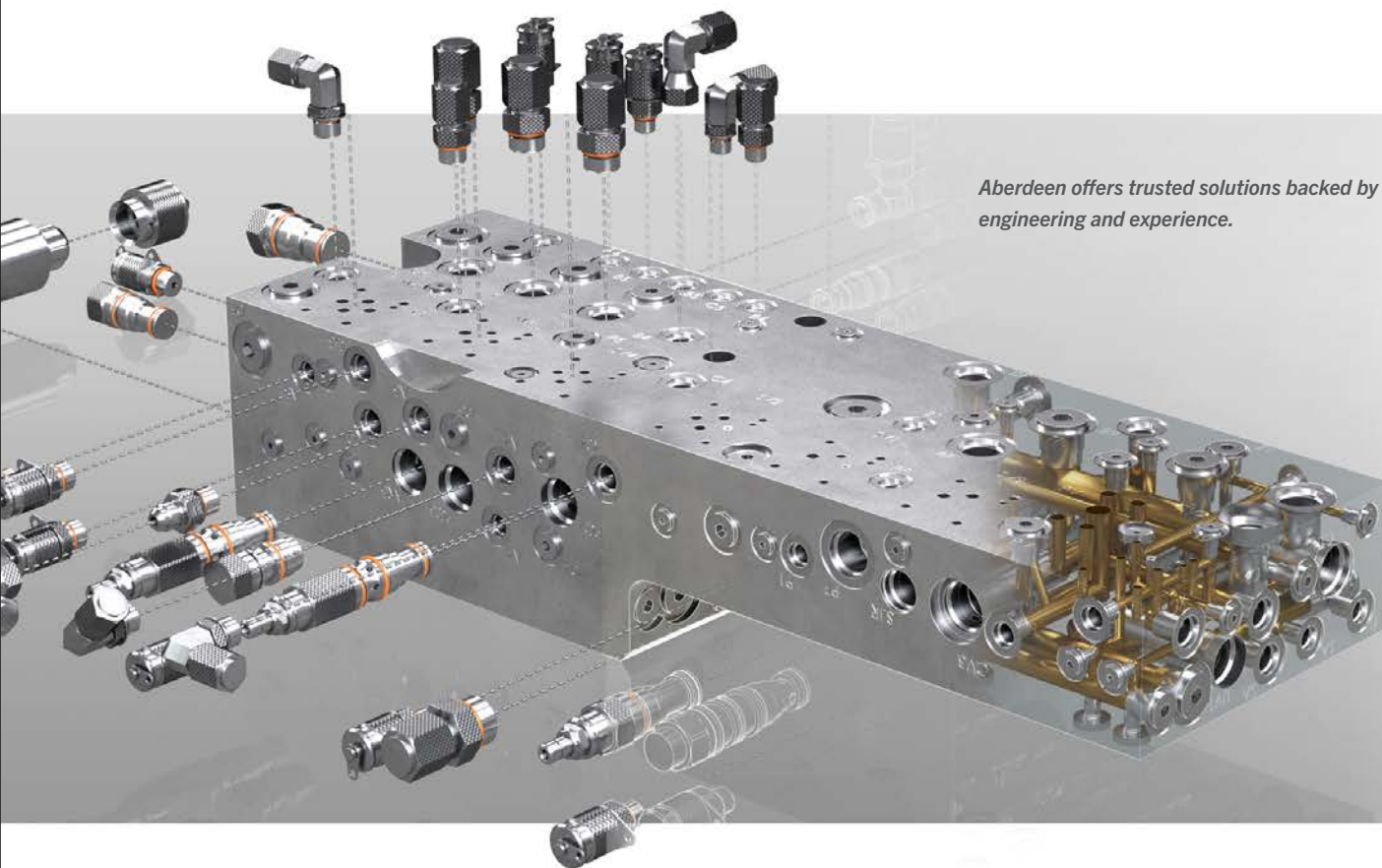
Testing / Validation



# A resource you can count on.

Aberdeen Dynamics and its divisions — Fluid Specialties, Industrial Specialties, and Valtec CNC — stand for a unified vision of motion and control expertise. Our 205,000 square foot campus contains state-of-the-art technologies to meet your fluid power requirements. We offer product lines from America's leading manufacturers with the internal know-how to make sure you get what you actually need. From custom-engineered solutions to time-saving kitting programs, our expert support can bring success to your project so you can tackle your next challenge in no time.

Since 1973, Aberdeen's engineering-driven integrated solutions have allowed us to solve what most companies can't. Because Aberdeen is 100% employee owned, every person who touches your project is engaged on a level other companies simply cannot match. Aberdeen is not merely a resource for fully-integrated motion and control systems, but an extension of your business.



*Aberdeen offers trusted solutions backed by engineering and experience.*

## Engineering

- Advanced technologies
- Programming
- Electronic controls
- Application support
- 3D modeling
- Integration
- Industry knowledge
- Training

Aberdeen Dynamics realized how important engineered solutions were in 1975 when we hired our first engineer, Joe Martin. Now, with over 250 years of accumulated engineering experience (and counting), Aberdeen Dynamics sees itself as a solutions company.

Make no mistake: our warehouse management systems keep our shelves stocked. But Aberdeen Dynamics knows life is not predictable and neither is your business. Aberdeen Dynamics' engineers are here to answer the call when our customers require it.

Aberdeen Dynamics maintains our commitment to engineering because solutions matter to you.





# Hydraulic

Aberdeen Dynamics is a leader in hydraulic power solutions. Whether your hydraulic power search is primarily based on cost, time, operational parameters, application, torque, or speed, Aberdeen has the hydraulic solution right for you.

Even if hydraulic power is a whole new language to you, allow our team of sales professionals to advise you after listening to you and understanding what you need. Aberdeen Dynamics also uses a team of veteran engineers to solve your hydraulic questions. Aberdeen Dynamics looks at the whole problem, and we supply solutions, products and answers for all of your hydraulic needs.

A 200,000+ sq. ft. campus built to provide you with more solutions.



- Engineered systems
- Custom manifolds
- Design assistance
- Troubleshooting & commissioning
- Extensive inventory
- Specialization:
  - Hydraulic power units
  - Valves
  - Cylinders
  - Presses
  - Pumps/motors
  - Winches

# Fluid Conveyance

Aberdeen understood in 1987 the highly specialized need for a company whose sole purpose was to find solutions for fluid conveyance. Fluid Specialties was born.

We are a proven leader in hydraulic, industrial and pneumatic fluid conveyance products including hoses, fittings, couplings, clamps, valves, measuring devices and related accessories. But exceptional products from America's top manufacturers are just the beginning.

Quality assurance and testing? We do that. In-house hose fabrication? We do that too. On-site Vendor Managed Inventory (VMI) programs? Of course we do.

Whatever your application, Aberdeen has a solution. Aberdeen has seen just about everything and looks forward to your next challenge. Our expert support and commitment to complete system integrity allow you to focus on the big picture, because we handle the rest for you.

- Hydraulic hose assemblies
- Industrial hose assemblies up to 10"
- Custom fabricated tube assemblies
- S/S welded hose assemblies
- BOP hose
- Imperial and metric tube fittings
- Vendor managed inventory
- Hose and fitting kitting
- Hose crimper placement programs

Hydraulic hose



Quick couplings, live swivels and check valves



Valves & brass fittings



Tube fittings



Accessories



Measurement devices



Thermoplastic hose & tubing



Industrial hose





# Valve Actuation

Actuators and remote-operated valve controls are mission-critical components with zero room for error. Aberdeen Dynamics uses an all-hands approach bringing engineering, manufacturing, assembly and quality control for fully integrated solutions for all valve actuators.

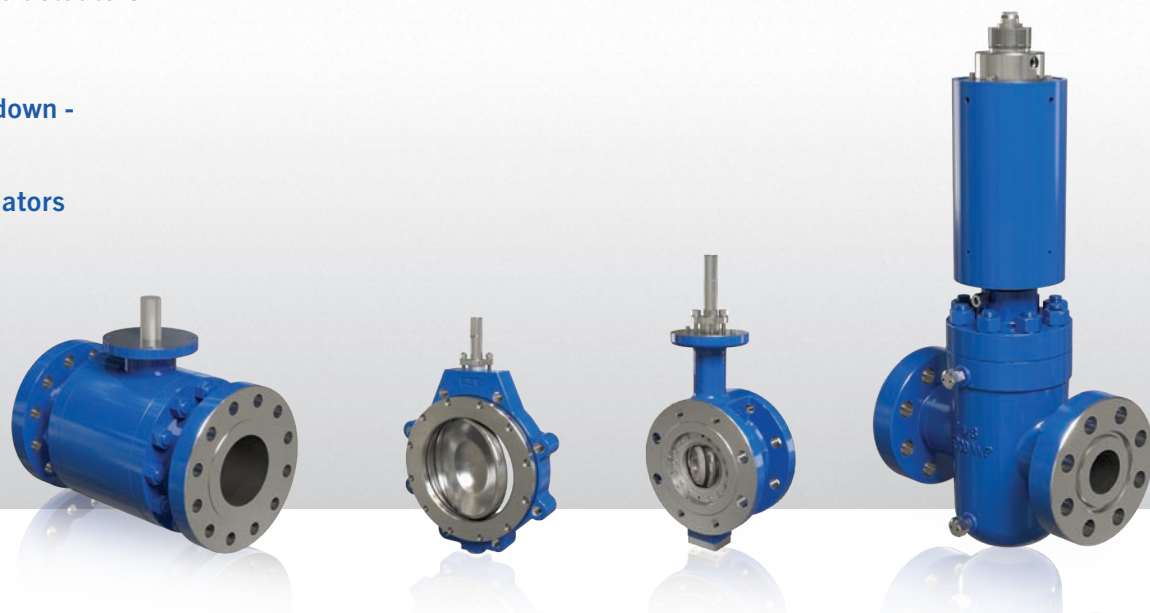
Field-tested electro-hydraulic actuators from Aberdeen Dynamics repeatedly demonstrate superiority to electric motor-driven actuators. Additionally, Aberdeen builds valve actuator systems for real-world applications in even the most hostile environments: indoors or out, low or high temperatures. You tell us what your job needs and Aberdeen delivers solutions.

- Hydraulic or electro-hydraulic actuators
- Linear or rotary actuators, SIL rated
- On/off or modulating actuators
- Spring return, double acting or stored energy
- Fail-safe emergency shutdown (ESD) actuators
- Motor or manual-operated actuators
- Partial stroke test (PST)
- High/low automatic shutdown - line break monitoring
- Solar-powered valve actuators

Aberdeen Dynamics valve actuators are available with a wide variety of valves.



*Just one of the thousands of solutions on Aberdeen's shelves.*



# Electro-mechanical & Pneumatic

Automation in the mobile and industrial marketplaces is growing exponentially. Demands for ease of use and efficiency drive the need for enhanced technologies. Here at Aberdeen Dynamics, we are a total motion and control provider. In addition to our know-how in hydraulic and pneumatic solutions, we are also a full-line electro-mechanical integrator. Whether your application calls for a servo motor, linear actuator, drive, HMI or unique gantry solution – you are in good hands. Armed with a powerhouse electro-mechanical product line from Parker, we engineer electro-mechanical solutions quickly. Need custom programming? Our in-house engineering team is ready to assist.

## Electro-mechanical

- Electric actuators
- Stepper and servo motors
- Drives and motion controllers
- Human-machine interfaces (HMI)
- Gantry systems
- System design and engineering
- Custom programming:
  - PAC, Codesys, InteractX, Interact Xpress, Legacy Parker

## Pneumatic

- Valves
- Cylinders
- Filter-Regulator-Lubricator (FRL)
- Redundancy
- Safety circuits
- Networking
- Vacuum system design



*Optimize ROI with customized Aberdeen solutions.*







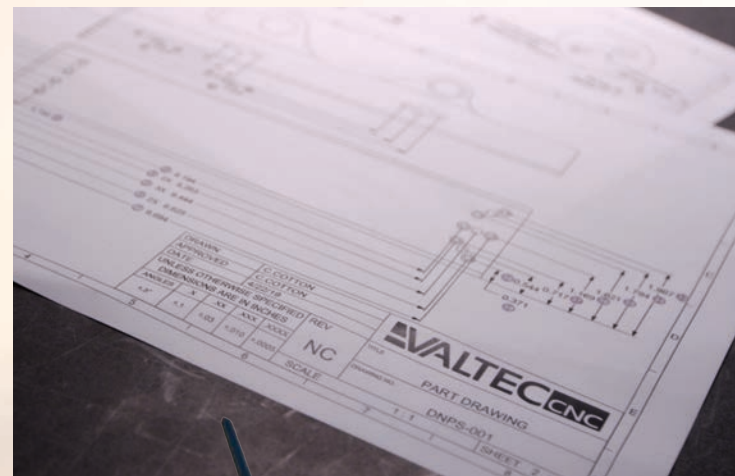
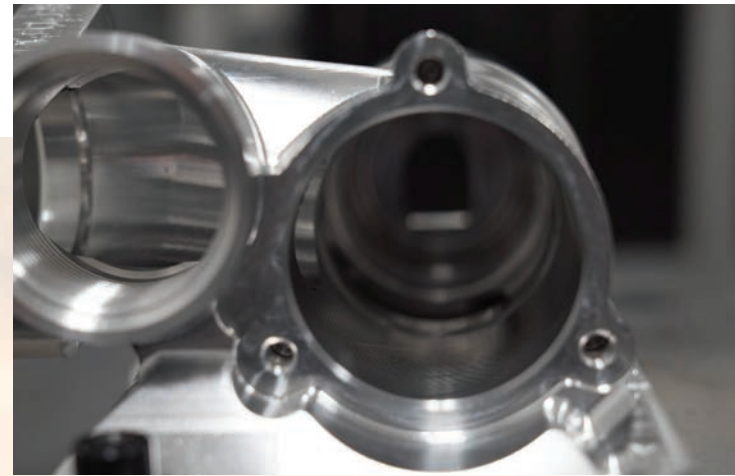
As a trusted supplier to the aerospace industry and beyond, we understand the vital importance of delivering exceptional quality in every part we produce. From rapid prototyping and low-volume orders to high production quantities, we have the machining capabilities and experience to make it happen.

Our modern facility features the most advanced technologies and equipment to give us the ability to provide 24/7 lights-out operation. This means we can increase value and efficiency while meeting important delivery milestones and production schedules.

Our customer-centric approach to the inspection process, which includes advanced coordinate-measuring machine (CMM) technology, ensures we deliver quality parts to your exact requirements. It is just one of the reasons driving our reputation and proven track record of excellence.

Simply put, we provide a higher standard of care and quality.

Our precision parts perform on hundreds of commercial, military and industrial platforms worldwide.



# Winch/Hoist/Gear Box

Aberdeen Dynamics serves American companies as their premier source for built-to-last hoist and winches along with standard winch packages. Aberdeen's team brings decades of winch expertise, offering customized winch solutions for automotive winches, towing winches, personnel winches along with any other winch solution your business needs. If you need a winch solution, Aberdeen solves it.

*Every problem has a solution. Aberdeen provides solutions.*

- All major U.S. manufacturers
- Horizontal and vertical applications
- Complete units and parts in stock
- Climate-controlled storage
- Same-day shipping available
- Engineering and technical support
- Factory-certified repair facility





# Testing/Validation Capabilities

No one understands fluid power systems and solutions better than Aberdeen Dynamics. Testing is a crucial part of our quality control efforts. Certification services round out our decades of fluid power system expertise. We love the power of a good idea, as long as it's verifiable: trust, but verify.

Performance and quality are of the utmost importance to Aberdeen — only second to your project's success.

Because if you don't succeed, neither do we.

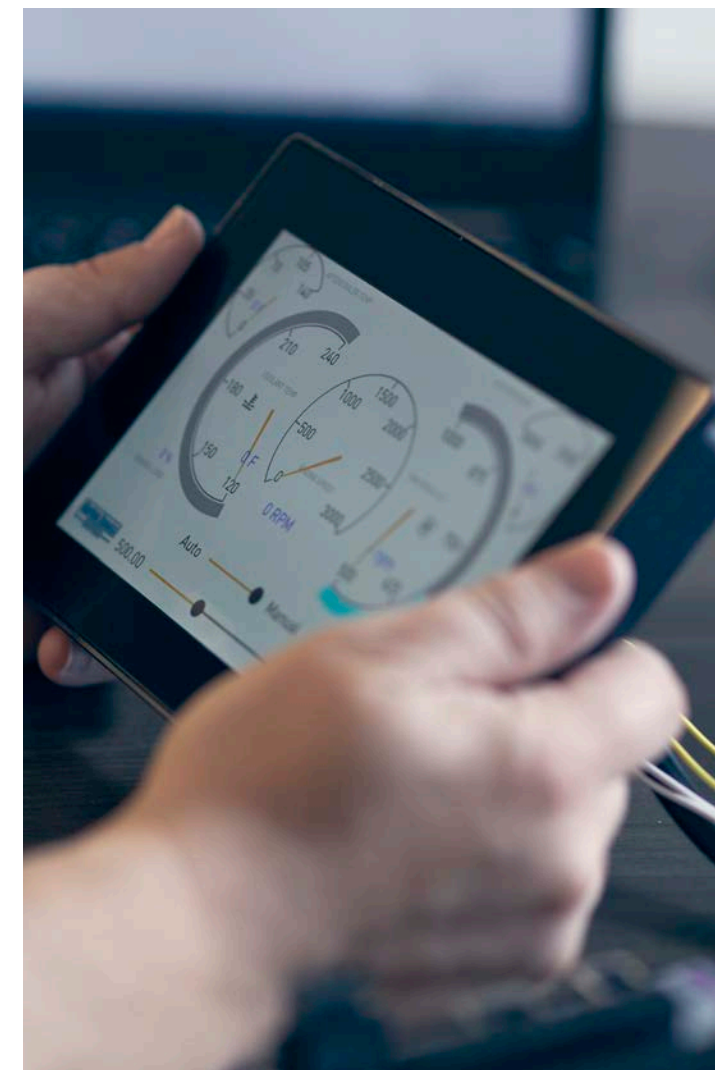
- **Hydraulic testing**
- **Valve testing**
- **Hose-burst testing**
- **Low-temperature testing (-50 degrees F)**
- **Hydrostatic testing**
- **Winch testing**

*Yesterday, today and tomorrow,  
Aberdeen's employee-owned company  
keeps you up and running.*

# Electronic Controls & Sensors/IoT

With today's growing emphasis on connectivity and the Internet of Things (IoT), electronic control systems are literally at the forefront of every project. We take pride in our ability to deliver virtually any solution to almost any customer. Looking for a standard component? With our massive warehouse, we probably have it in stock. If not, it's on its way. And if you're in the market for a custom solution for a specialized application, Aberdeen Dynamics has you covered.

Our expertise can help you save money while taking the guesswork out of operations and exponentially increasing functionality. Our products are easily "brandable" and support multiple languages, too.



## Pneumatic

- **Mobile and industrial PLDc**
- **Closed-loop positioning systems (servo, proportional)**
- **HMI (human-machine interface)**
  - Visual (custom displays/monitors, LED)
  - Tactile (touchscreens, keyboards, joysticks, switches)
- **Custom programming**
  - Parker, IQAN, Delta, IDEC, Vansco

## Sensors/IoT

- **Machine status**
- **Predictive maintenance**
- **Remote communication (WiFi, cellular, bluetooth)**
- **Continuous oil condition monitoring**
- **Particle counting and contamination detection**
- **Sensors (tilt, pressure, proximity, rotary, speed, temp, level)**



# 100% employee owned.

Aberdeen Dynamics and our experienced team of employee-owners pride ourselves on combining custom, engineered solutions with unsurpassed in-house capabilities.

We don't simply provide parts, engineering, service, assembling, testing and solutions.  
We provide it all — to support your success.

*We bring the strength of our divisions together into one powerful resource for you.*

**FLUID**  
SPECIALTIES

 **INDUSTRIAL**  
SPECIALTIES, LLC

 **VALTEC** CNC

*We partner with industry leaders to bring you the very best.*



**Aberdeen Dynamics**

Contact us for more information.  
[sales@aberdeendynamics.com](mailto:sales@aberdeendynamics.com)

17717 East Admiral Place • P.O. Box 582510 • Tulsa, OK 74158-2510 • 918.437.8000 • [AberdeenDynamics.com](http://AberdeenDynamics.com)